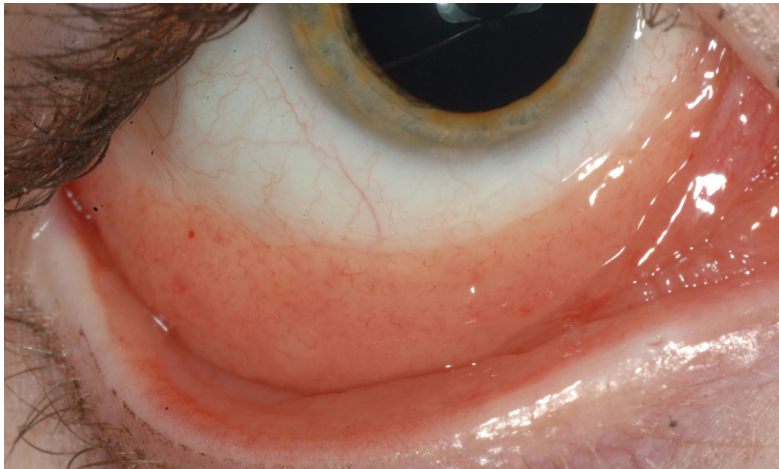


What is Conjunctival Lymphoma?

CONJUNCTIVAL LYMPHOMA

You have been diagnosed with **CONJUNCTIVAL LYMPHOMA**. Lymphoma can occur in and around the eye. The conjunctiva is the most common area. There are different types of conjunctival lymphoma: marginal zone of the mucosa associated lymphoid tissue (MALT-most common), follicular, mantle cell and diffuse. The etiology is not known but is thought related to chronic inflammation from autoimmune conditions or infectious causes.



CONJUNCTIVAL LYMPHOMA

Can occur in or around the eye. Looks like a salmon patch on the eye.

Conjunctival lymphoma looks like a salmon patch on the eye. Once seen in the office, surgery will be scheduled to confirm the diagnosis. Once we know the diagnosis, then you will need to see your medical doctor or a medical oncologist for a complete systemic workup. Those patients that have lymphoma around both eyes are more likely develop lymphoma elsewhere in the body.

TREATMENT OPTIONS

Conjunctival lymphoma is a cancer but is considered low grade and treatable. Your treatment may include observation, if small. Surgery with freezing treatment can control the disease. Radiation melts the tumors away. Sometimes we will offer injections into the lesion to help it shrink. If patients have it around both eyes, we may recommend intravenous medication to treat the whole body since those patients are at higher risk for systemic disease.

PATHOLOGY

After the pathology is reviewed, the tissue will be sent for tumor markers to see if a mutation can be found that caused the lymphoma to grow.